

# BACD

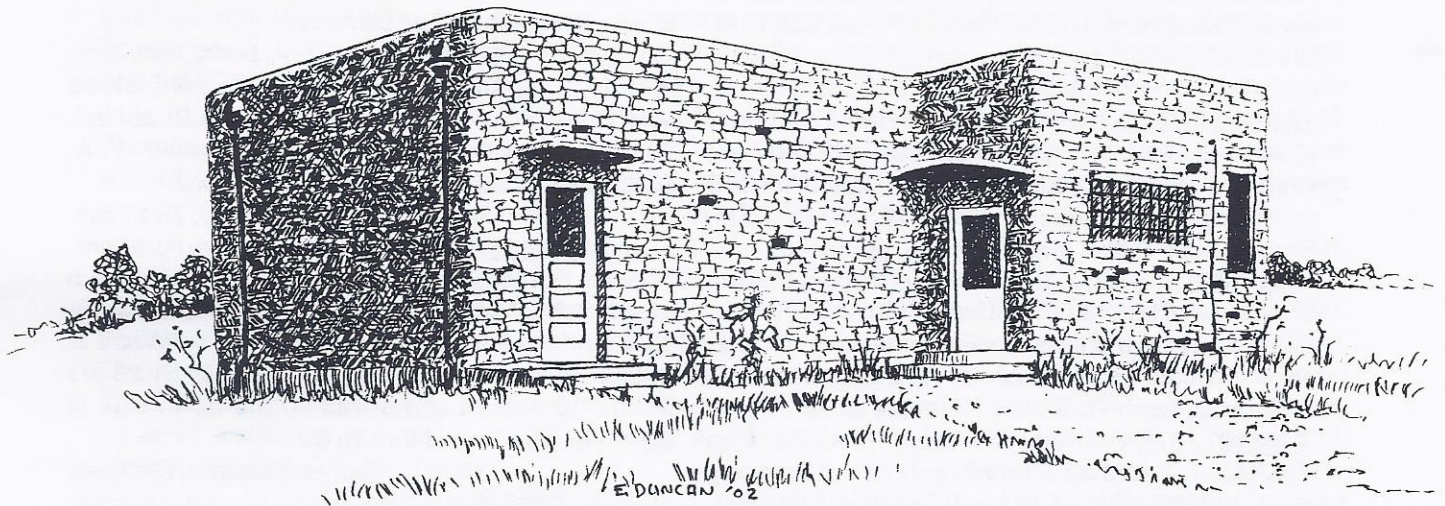


# EABCE

VOL. 28, NO. 3

LECOMPTON, KANSAS

FALL 2002



## YARNOLD SCHOOL DISTRICT # 40

There were several teachers that taught at Yarnold from Lecompton. So with the information from Goldie Daniels book on schools of Douglas County , I will try and add some more information on the school that I have found very interesting and hope our readers will enjoy the history of this rural school.

It is believed that there was a log cabin erected about 1864, on land that was donated by Christopher Wulfkuhle. The Wulfkuhles' were early settlers in and around Stull and the early ones came from Germany. Thomas Yarnold, M. D. and his wife came from England and built a stone house a short distance east of the school site. The school was named for Thomas Yarnold.

On April 28, 1869, a deed was drawn by Christopher Wulfkuhle and his wife, Mary A. Wulfkuhle to Jacob Bidinger, Christopher Wulfkuhle and Benjamin Stowe as Board of District No. 40, for one acre land, in the S.E. 1/4 of Sec. 33, T. 12, R. 18, same to be held in trust and used solely for school purposes.

A building of native stone was erected on this site about 1869. The following are some of the early records of Annual Meetings held in the school from 1871 to 1897. These records were furnished by Ruth Ice, as Raymond was one of the last to serve as District Clerk.

The first school records were taken in 1897-98 by the county and can be found at the Register of



Deeds in the Lawrence Court House and also in the Spencer Library at Kansas University.

These are the first records recorded.

July 1, 1871-Meeting called to order by the director. Board members were Valentine Roller, Christopher Wulfkuhle and John Houk. During this meeting Vulius Hackfleth was elected Director and Benjamin Stowe as Clerk. Oct. 2, 1871-Hired Mary M. Bruner for 3 months at \$40. a month commencing Sept. 4, 1871 for the sum of \$120. to be paid on or before the 24th of Nov. 1871.

April 11, 1872-At this meeting, Matthew Duke elected Director, Warren Stowe elected Clerk and Benjamin Stowe elected Treasurer.

On motion to have school, three months during summer commencing June 3, 1872, teacher James H. Hoover for the sum of \$110. and four months, commencing Nov. 4, 1872. Teacher hired was F. M. Shinn. at \$42.50 a month a sum of \$170. be paid on or before 1st of Mar. 1873.

March 27, 1873-They again met and Wm. C. Porter elected at Director, Vulius Hackfleth as Clerk and Christian Wulfkuhle as Treasurer. Voted for a 5 month school commencing Nov. 1, 1873. F. M. Draper was hired as teacher at \$45. per month.

Aug. 13, 1874-Dir: Wm. C Porter elected Warren Stowe as Clerk & Christian Wulfkuhle, Treas. Voted on a six month school commencing Nov. 2, 1874. Teacher Louis J. Rote at \$25. a month and F. P. Thomas for the following 3 months at \$30.

Aug 12, 1875-Dir. Wm. C. Porter. F. A. Derby as new clerk. Voted on 6 month school commencing Sept. 1, 1875 with a two week vacation. Teacher; E. N Draper at \$45. a month.

Aug. 10, 1876-Dir: Wm. C. Porter. Warren Stowe was elected clerk. F. A. Derby Treas. Voted for five month school. Teacher no known. Voted to rent school house for elections for \$3.00 per day in term time and \$2.00 not in term time.

Sept. 26, 1877-John Houk elected as Director.

Warren Stowe Clerk & F. A. Derby, Treas. Voted on a 5 month school commencing Oct. 1, 1877. Teacher Mary D. White at \$30. a month. Voted for a 2 1/2 mill levy for school purposes.

Aug. 8, 1878-Christian Wulfkuhle was elected Treas. Voted to have 5 month school commencing Nov. 1, 1878. Susie F. Platts hired at \$25. a month. Also voted to have the school house insured.

Warren Stowe, Dist. Clerk.

Aug. 16, 1879-Voted to hire Martha Hyde for 5 month school commencing Nov. 3, 1879.

Benjamin Stowe, Dist. Clerk.

Aug. 12, 1880-Thomas Benjamin was chosen Director. Voted for a 5 month school commencing

the third Monday of Oct, 1880. Hired Mary A. Powell at \$30. a month. Voted for a 7 mill levy for school purposes.

Benj. Stowe, Dist. Clerk

Aug. 11, 1881-Henry Wulfkuhle chosen as Treas. Voted on a 5 month school commencing the first Monday of Oct. Hired Susan Platts as teacher. Voted for 7 mill levy. Benjamin. Stowe, Dist. Clerk.

Aug. 12, 1882-F. A. Derby was elected Clerk. Voters attending were 8. Voted on 5 month school commencing Oct. 1 and a 7 mill levy. Teacher Addie Cowden. John Houk was awarded a contract of 4 cords of wood at \$4.50 a cord.

F. A. Derby, Dist. Clerk.

Aug. 9, 1883-Voted on a 10 mill levy and also for a five month school. Teacher Lottie Thurber. Voters attending were 7. Christian Wulfkuhle awarded a contract for 4 cords of wood at \$3.50 a cord. Mr. Bidingier was elected as Director.

F. A. Derby, Dist. Clerk.

Aug. 14, 1884-Director was absent, so Benj. Stowe acted as Chairman. Voted on 6 month school. Teacher Florence Tussey at \$35. a month. F. A. Derby contracted for wood at \$4.50 a cord.

F. A. Derby, Dist. Clerk.

Aug. 13, 1885-There were 10 voters present. Thomas Benjamin elected as Clerk. Voted on a 5 month school commencing Oct. 5, 1885 to 3-26-1886 and a 10 mill levy. Teacher Gertie Wood at \$30. a month. Voted to pay C. Wulfkuhle \$1.25 per rod for 10 rods of stone wall on the north side of school lot and the old thrown in.

Thomas Benjamin, Dist Clerk.

Aug. 12, 1886-Wm. C. Porter was elected Director. Voted for a 5 month school commencing Oct. 4, 1886 to Feb. 18, 1887. Hired Bert M. Gregory as teacher at \$30. a month. Christian Wulfkuhle furnished wood at \$4.50 a cord.

Thos. Benjamin, Clerk.

June 30, 1887-11 voters present. Voted to pay H. Wulfkuhle \$12.50 for stone fence. Voted that the school board put in a hard pine floor, first class lumber. Also to put two rods through school building and take off the wainscoating or as much as necessary. Voted for five month school commencing Mon., Oct. 3, 1887 to Mar. 27, 1888. Hired Sophia McGuck at \$35. a month Christian Wulfkuhle was to furnish 4 cords of wood at \$3.50 a cord. Adam Scheer was elected Treasurer.

T. Benjamin, Dist. Clerk.

June 28, 1888-J. D. Martin elected Clerk. Voted on a 5 month school commencing Oct. 1st, 1888 to Feb. 29, 1889.. Hired Jean Steele as teacher at \$30. a month. Also voted for 7 mill levy. Henry Wulfkuhle to furnish 3 cords of dry oak wood at



\$3.00 a cord.

J. D. Martin, Dist. Clerk.

July 19, 1888-Special meeting. Agreed that the school house shall be pointed on out side. Also agreed to build a new privy and repair old one.  
Sept. 25, 1888-Spencial meeting. 12 voters. Andrew Johnson moved for a new floor and seconded by Mr. A. Finley. J. D. Martin, Dist. Clerk.  
July 25, 1889-A new board was elected, John Houk, Director, Benjamin Stowe, Clerk and Christopher Wulfkuhler, Treasurer. Voted for a 5 mill levy and five month school commencing the first Monday in October, 1889 to Mar. 22, 1890. Hired Minnie A. Chapman at \$30. a month.

Benj. Stowe, Dist. Clerk.

July 31, 1890-8 voters attended. Voted for a four month school commencing the first Monday in Oct. Voted for a 7 mill levy. Teacher Minnie Chapman at \$37. a month.. Adam Scheer was chosen Treasurer. A. Finley was to furnish 4 cords of oak wood at \$3.00 a cord.

Benj. Stowe, Clerk.

July 31, 1891-A. Finley was elected Director. Thomas Benjamin as Clerk. Voted for a 5 month school commencing Oct. 5 to be taught by a female teacher. Voted for 7 mill levy. A. Finley to furnish 3 cords of wood for the sum of \$10.00 Teacher Pearl Laptad. Thos. Benjamin, Dist. Clerk.  
July 28, 1892 -P. A. Derby elected Director, term of 3 years. Voted for a 5 months and one month if the District so order. Commencing the first Monday in Sept. Voted for a 8 mill levy. B. Stowe to furnish 4 cords of wood, either Hickory or Oak at \$3.50 a cord. Teacher Rebecca Herning

Thos. Benjamin, Dist. Clerk.

July 23, 1893-Adam Scheer was elected Treasurer for 3 years. Voted for 6 month school with 2 wees vacation during holidays. Voted to raise the rent of school house for elections from \$3.00 to \$5.00. Voted to pay A. Finley for 4 cords of wood at \$3.25 a cord. Voted 8 mills for teacher wages & 2 mills for incidentals. Teacher: Emma Eberhard. Thos. Benjamin, Dist Clerk.

July 26, 1894-J. D. Martin elected Clerk. Voted 6 month school with 8 mills for teacher wages and 3 mills for incidentals to begin first Monday in Sept. Voted to pay John Unger for 3 cords of hard wood at #3.25 a cord. Teacher: Emma Ice. \$32.50.

Thos. Benjamin, Dist. Clerk

July 25, 1895-Andrew Johnson was elected Director. Voted 6 month school commencing first Mon. in Oct. Voted 10 mills teacher wages and 2 mills for incidentals. Teacher Hattie Ech. \$32.50

Adam Scheer, Dist. Clerk

July 30, 1896-Mr. Ice elected Director. Voted 6 month school commencing the 3rd Mon. in Sept.

with 2 weeks vacation. Voted for John Unger to furnish 4 cords of hard wood at \$3.50 a cord. Teacher Eva Trowe.

J. C. Martin, Dist. Clerk.

Aug 17, 1897-Special meeting. Miss Ella Stone hired to teach a term of 6 months at \$30.00 a month

J. D. Martin, Dist. Clerk.

July 1898-Dir: C. F. Wulfkuhlfe, Treas. Otto Bidinger. Teacher Ella Stone hired at \$35.00 a month.

J. D. Martin, Dist. Clerk.

July 27, 1899-Dir: C. F. Wulfkuhle. Voted 6 month school, commencing Oct. 1st. Voted 8 mills teacher's wages and 2 for incidentals. Henry Wulfkuhle to furnish 4 cords of wood at \$3.50 a cord. Voted to sell old stove and hire Adam Nuffer to clean school grounds. Teacher, Mary Glanville Gill \$30.00 a month.

J. D. Martin, Dist. Clerk.

July 1900-Teacher Minnie Chapman at \$35. a month. Dir: Christian Wulfkuhle; Treas. Otto Bidinger.

Samuel Buchheim Dist. Clerk.

July 29, 1901-To hire Minnie Chapman teacher for 6 month term at \$37. a month. to commence Sept. 16. Voted to buy 3 new rear seats for the new desks, also buy new stove pipe. Elected Christian Wulfkuhle as Director.

Samuel Buchheim, Jr. Dist. Clerk

Sept. 3, 1901-Special meeting-Board agreed to let the Gress boy from Dist #73 come to school in Dist. # 40.

Samuel Buchheim, Jr. Dist. Clerk.

Aug. 2, 1902-School board met in special session in County superintendents office and agreed to hire Miss Edna Honold teacher for 6 months at \$32. a month.

Samuel Buchheim, Jr. Dist. Clerk.

June 20, 1903-Agreed to hire Miss Hetty Chesney at \$38.00 a month. Geo. Houk to furnish 4 cords of wood at \$3.50 a cord.

Leonard Ice, Dist. Clerk

June 16, 1904-C. H. Wulfkuhle was elected Director. Voted 6 month school commencing first Mon. in Sept. Voted to let Lee Machita build on an Anti-room for \$143.25. George Houk to furnish wood at \$3.50 a cord. Sold old seats and windows for \$31.38. July 24, 1904, met at county superintendents office and agreed to hire Lee M. Ramsay as teacher at \$45.00 a month.

Leonard Ice, Dist. Clerk.

July 22, 1905-Borrowed \$50. from Henry Wulfkuhle for 60 days. Elected Will Nuffer for treasurer. Voted 7 month school commencing Sept. 18, 1905. Henry Wulfkuhle to furnish wood at \$3.50 a cord. Teacher Miss Mary Tucker at \$42.50 a month and Roy Kennedy.

Leonard Ice, Dist. Clerk.

July 19, 1906-Leonard Ice elected clerk again. Voted for 6 month school. Teacher Lena Jones at \$45. a month. Voted to build out house the size of



the old one. Agreed to let H. Wulfkuhle move the stone fence in front of the school house. Fred Brokman was to have the hay for cleaning the yard. Henry Wulfkuhle to furnish wood at \$3.50 a cord.

Leonard Ice, Dist. Clerk

July 18, 1907-C. F. Wulfkuhle elected Director. Teacher Mattie Caldwell from Lecompton. Voted not to get a flag. Charley Roller was to furnish wood at \$3.50 a cord for 4 cords.

Leonard Ice, Dist. Clerk

July 16, 1908-John Unger elected treasurer. Voted plaster ceiling and put down mica floor. Also voted for some new seats. Teacher Lena Jones.

Leonard Ice, Dist. Clerk

July 16, 1909-Leonard Ice elected clerk. C. F. Wulfkuhle was elected Director. Voted for 7 month school commencing Sept. 20. Teacher Clara Allison. It was left to the board to repair school house. Henry Wulfkuhle to furnish wood at \$3.50 a cord.

Leonard Ice, Dist. Clerk

July 1910-Dir. C. F. Wulfkuhle, Clerk Leonard Ice, and Treas. John Unger Teachers were Myrtle Epley and Ira Hird.

Leonard Ice, Dist. Clerk

April 14, 1911-John Unger was elected treasurer. Voted for 7 month school, commencing Sept. 11, 1911. Teacher Laura Butler \$55.00 a month.

Leonard Ice, Dist. Clerk

We do not have any more annual records, The following taken from school records at Court House or Spencer Library.

1912-1913-Edna Epley \$48.00. a month, & Carl Hird, Sr. Dir: Henry W. Wulfkuhle, Treas. John Unger.

J. D. Martin, Dist. Clerk

1913-1914-Dir. Wm. Nuffer, Treas. John Unger. Teacher Janet E. Fink at \$49. a month.

J. D. Martin Dist. Clerk

1914-1915-Dir: Wm. Nuffer, Treas. John Nuffer. Teacher Janet E. Fink.

J. D. Martin Dist. Clerk

1915-1916-Dir: George Houk, Jr., Treas. none written in. Teacher Ada Schroyer of Lecompton at \$52. a month.

J. D. Martin Dist. Clerk

1916-1917-Dir. Geo. Houk, Jr., Treas. Otto Bidinger. Teacher Ruth Erickson.

J. D. Martin, Dist. Clerk

1917-1918-Dir: Geo. Houk Jr., Treas. O. A. Bidinger. Teacher, F. H. Chilcote.

Charles Wulfkuhle Dist. Clerk

1918-1919-Dir. Geo. Houk, Jr., Treas. O. A. Bidinger. Teacher Mabel Reece at \$60. a month.

Roy Deskin Dist. Clerk

1919-1920-Treas. O. A. Bidinger. Teacher Mabel Reece \$60.

Roy Deskin Dist. Clerk

1920-1921-Dir-not mentioned, Treas. not mentioned-Teacher Viola Tucker and Philip Sehon

of Lecompton.

Rudolph Houk, Dist. Clerk

1921-1922-Dir. Geo. Houk, Jr., Treas. O. A. Bidinger. Teacher Clara Puel \$75. a month.

Rudolph Houk Dist. Clerk

1922-1923-Dir. Geo. Houk, Jr., Treas. O. A. Bidinger. Teacher Marie Brock, \$80.00 a month

Rudolph Houk Dist. Clerk

1923-1924-Dir: Geo. Houk, Jr., Treas. O. A. Bidinger. Teacher Ruth Schroyer of Lecompton at \$70.00 a month.

Rudolph Houk Dist. Clerk

1924-1925-Dir. George Houk, Jr., Treas. O. A. Bidinger, Jr. Teacher Helen C. King \$70. a month

Rudolph Houk Dist. Clerk

1925-1926-Dir. George Houk, Jr., Treas. O. A. Bidinger-Teacher Opal Irene Shaw \$75.00 a month.

Rudolph Houk Dist. Clerk

1926-1927-Dir. George Houk, Jr., Treas. not mentioned. Teacher Opal Irene Shaw. \$82.50 a month.

R. A. Houk Dist. Clerk

1927-1928-Dir. George Houk, Jr., Treas. not mentioned. Teacher Blanche A. Shelly of Lecompton at \$90. a month. R. A. Houk Dist. Clerk

1928-1929-Dir: not mentioned, Treas. J. D. Wilson. Teacher Mary A. Norris at \$100. a month.

R. A. Houk Dist. Clerk

1929-1930-Dir. not mentioned, Treas. J. D. Wilson. Teacher Mrs. Mary Morrow \$110. a month

R. A. Houk Dist. Clerk

1930-1931-Dir. Geo. Houk, Jr., Treas. J. D. Wilson-Teacher Minnie Beene or Teresa Anderson of Lecompton, \$100.00 a month.

R. A. Houk Dist. Clerk

1931-1932-Dir. Geo. Houk, Jr., Clerk. R. A. Houk, Treas. J. D. Wilson. Teacher Minnie Beene \$85. a month.

R. A. Houk Dist. Clerk

1932-1933-Dir. Geo. Houk, Jr., Treas. J. D. Wilson. Teacher Katherine Brass of Lecompton, \$60. a month.

R. A. Houk Dist. Clerk

1933-1934-Dir. Geo. Houk, Jr., Treas. John Wilson. Teacher Katherine Brass \$60. a month.

Harry Wulfkuhle Dist. Clerk

1934-1935-Dir. Theodore Buchheim, Treas. John Wilson. Teacher Gladys Black \$400.00 annually

Harry Wulfkuhle Dist. Clerk

1935-1936-Dir. Theodore Buchheim, Treas. John Wilson. Teacher Agnes Stevens \$50. a month.

Harry Wulfkuhle Dist. Clerk

1936-1937-Dir. Theodore Buchheim, Treas. Geo. Houk, Jr. Teacher Agnes Stevens \$520. annually.

H. O. Wulfkuhle Dist. Clerk

1937-1938-Dir. Theodore Buchheim, Treas. Geo. Houk, Jr Teacher Jewell Kirby \$60. a month-Register of Deeds has Agnes Stevens.

H. O. Wulfkuhle Dist. Clerk



1938-1939-Dir. Theodore Buchheim, Treas. Geo. Houk, Jr. Teacher Jewell Kirby \$484, for 31 weeks.

H. O. Wulfkuhle Dist. Clerk.

1939-1940-Dir. Theodore Buchheim, Treas. Geo. Houk, Jr. Teacher Clarence Smith of Lecompton.\$560. for 32 weeks.

H. O. Wulfkuhle Dist Clerk.

Taken from the Lawrence Journal-World Jan. 23, 1940 SCHOOL IS BURNED

Students of Yarnold school, district 40, are taking an enforced vacation because fire of undetermined origin destroyed the school house Tuesday morning.

Classes will be resumed early next week in a vacant house about a mile from the school building. Supt. Harold Fisher said today.

Yarnold school is located about nine miles west of Lawrence. Fisher said that the building was in flames when the teacher, Clarence Smith of Lecompton, arrived Tuesday morning. The blaze was out of control by the time aid arrived from the neighborhood.

The building had a stone exterior, most of which remained standing, but the wooden interior and equipment was completely destroyed. The damage is not known, Fisher said.

Nine pupils attend the school, Ted Buchheim, Harry Wulfkuhle and George Houk are the members of the school board.

Fisher said that while attendance in rural schools is low because of cold weather, all except Yarnold are in operation.

The superintendent said that some schools were forced to close for several days after the heavy snow until the roads were cleared.

#### **School Dist. Clerk's Record 4-8-1940**

School House Construction Work.

The old school was insured for \$1,000. which they received to start the rebuilding.

7-5-1940-John Stephens-Engineering for the Blue Print of new building at a cost of \$303.00. Also had to pay for transportation for Stephens overseers.

1940-1941-Dir. Theo. Buchheim, Treas. Geo. Houk, Jr. Teacher Clarence Smith \$560. annual pay.

H. O. Wulfkuhle Dist. Clerk.

1941-1942-Dir. Theo. Buchheim, Treas. Geo. Houk, Jr. Teacher Clarence Smith \$580. annual pay.

H. O. Wulfkuhle Dist. Clerk.

1942-1943-Dir. Geo. Forrester, Treas. Geo. Houk, Jr. Teacher Mrs. Esther Kump 8 month school. \$680. annual pay.

H. O. Wulfkuhle Dist. Clerk.

1943-1944-Dir. Geo. Forrester, Treas. Geo. Houk, Jr. Teacher Mrs. Esther Kump \$680. annual pay.

H. O. Wulfkuhle Dist. Clerk.

1944-1945- Dir. Geo. Forrester, Treas. Geo. Houk, Jr. Teacher Etta Smith, \$966. annual pay.

H. O. Wulfkuhle Dist. Clerk.

1945-1946- Dir. Russell Houk, Treas. George Houk, Jr. Teacher Etta L. Smith \$922. annual pay.

H. O. Wulfkuhle Dist Clerk.

1946-1947-Dir. Harry Wulfkuhle, Treas. George Houk. Teacher Maxine Tornigal \$150 a month.

Russell Houk Dist. Clerk

1947-1948-Dir. Russell Houk, Treas. Geo. Forrester. Teacher Maxine Tornigal \$175. a month

Harry Wulfkuhle Dist. Clerk

1948-1949-Dir. Russell Houk, Treas. Geo. Forrester. Teacher Nellie Streib (Now Mrs. Calvin Hartman) \$175. a month..

Mrs. J. M. O'Conner Dist Clerk

1949-1950-Dir. Mr. Warrington, Treas. Russell Houk. Teacher Jerre Asel \$200. a month

Mrs. Addie Deatherage Dist. Clerk

1950-1951-Dir. Geo. Steele, Treas. Russell Houk. Teacher Sylvia Mersey \$225. a month

Addie Deatherage Dist. Clerk

1951-1952-Dir. Geo. Steele, Treas. Russell Houk. Teacher Sylvia Mersey

Addie Deatherage Dist. Clerk

1952-1953-Dir. Geo. Steele, Treas. Russell Houk. Teacher Sylvia Mersey \$300 a month.

Addie Deatherage Dist. Clerk

1953-1954-Dir. Geo. Steele, Treas. Russell Houk. Teacher Sylvia Mersey.

Addie Deatherage Dist. Clerk

1954-1955-Dir. Geo. Steele, Treas. Russell Houk. Sylvia Mersey \$350. Addie Deatherage Dist. Clerk

1955-1956-Dir. Geo. Steele, Treas. Russell Houk. Teacher Lou Ella Salisbury, \$2,600. annual pay.

Those who know, Mary Lou Morris of Lecompton, this is her mother. Mrs. Salisbury also taught in the Lecompton Grade School.

Raymond Ice Dist. Clerk

1956-1957-Dir. Geo. Steele, Treas. Russell Houk. Teacher Lou Ella Salisbury \$3,013.

Raymond Ice Dist. Clerk

1957-1958-Dir. Geo. Steele, Treas. Russell Houk. Teacher Lou Ella Salisbury

Raymond Ice Dist. Clerk

In May, 1958, a special homecoming observance was held at the Yarnold school. A basket dinner highlighted the homecoming which was attended by 202 persons.

During the afternoon program, former teachers were recognized, the oldest present was Emma Ice Norris of Kansas City, Ks., who taught in 1894. Coming the greatest distance for the event was a former teacher, Faye Chilcothe of Clayton, N. M.,



who taught in 1918.

Some of the oldest pupils present were Mrs. Clara Unger Tuckel of Stull community, Grace Derby and Sophia Scheer Gilder of Topeka. They had attended school more than 65 years ago.

A program, arranged by the teacher, Mrs. John Salisbury of Lecompton and the music teacher, Mrs. Theodora Ericsson of Lawrence, was presented by the school pupils. Sonny, Brenda and Dee Hale; Mary and Allen Houk, Joyce Schwemmer, Sandra Steele, Barbara Anderson, Steven Holloday, Richard Ice and Sharon Coffman.

1958-1959- Teacher, Norma Suderman

Raymond Ice Dist. Clerk.

1959-1960- Teacher, Loretta Schoonover

In Feb. 1960, At the Community meeting, Mary Nell Lasswell presented the program by showing pictures.

Raymond Ice Dist. Clerk.

Aug. 25, 1961-Lecompton School Dist. #36 do hereby agree to accept the pupils of Yarnold School Dist. 40 on a tuition basis, for a fee of \$100. per pupil, per semester starting Sept. 15th and ending with the completion of the first semester: and second semester beginning with the 1st day of Feb. and ends with the completion of school. Signers for Dist. #40 were Raymond Ice, Russell Houk & George Steele. Signers for Dist. #36 were Max McClure, Wm. Leslie, Pete Bahnmaier, Geo. E. Smith & Glen E. Henrichsen.

1960-1961 & 1961-1962-No school

Raymond Ice Dist. Clerk.

Yarnold School District #40

Lawrence Journal World-April 20, 1962.

#### NOTICE OF SPECIAL SCHOOL MEETING

To the voters of Common school district #40 in Douglas Co., Kansas. You are hereby notified that a special meeting of the voters of the above mention district will be held at 7:30 p.m. on the 30th of April, 1962 at Kanwaka Hall for the purpose of voting a ballot, to disorganize said district and to attach the territory to another district or districts.

Dated April 19, Signed by Raymond Ice, Clerk Dist. 40.

Lawrence Journal World-May 1, 1962

School District Voted to Join with Lecompton

Yarnold School District No. 40 voted 26-0 Monday to annex with Lecompton Joint District No. 36. A year ago, Greenwood Valley annexed with Lecompton, and in 1958, Barker voted to annex with Lecompton. Order of attachment District 40 to Lecompton District 36 was signed by Wm. Leslie Clerk; Max McClure, Pete Bahnmaier, George E. Smith and Edward Cook.

Yarnold is a closed district. Another closed

district, Enterprise, is talking about annexation with Overbrook, and Belvoir, the third closed district, must disorganize by July 1, since it has been closed three years. A closed district is one of which school is not now being held.

Three one-teacher districts, Kanwaka, with 17 students; Twin Mound, with 13 students, and Brackett, with 24 students, plan to continue as they are according to County Superintendent of Schools Earl Wilson.

The following was published in the Lawrence Journal-World Wed. May 2, 1962. This is why I have tried to salvage and save the history of our 'Little Red Schools'

Iona Spencer

'Little Red School' Is Fading' by Earl Morey

The Little Red School House, once one of the most familiar sights in Douglas County, and once the most popular community meeting place in each school district, has almost disappeared, the victim of consolidations and annexations.

The harsh demands of modern education, plus the skyrocketing costs of providing that education, have forced more and more school districts to join forces in order to accomplish the important goal of educating the nation's children better.

Stubborn and proud school patrons in the pre-World War II era froned on consolidations and fought long and bitter battles to keep the Little Red School in operation. Often, there were as few as two or three students. The teacher's salary, less than \$50, and costs of coal to heat the school often drained meager school budgets.

Many teachers of that era lived with nearby farm families in order to make their monthly pay checks stretch as far as possible. Transportation was a problem, and almost all youngsters walked to school.

Douglas County has had as many as 140 separate school districts, although not all were in operation. For instance, there was Baldwin City. No. 17, then Baldwin Rural and now Baldwin consolidated Joint District 92. There was Belvoir, Old Belvoir and New Belvoir, all actually one district.

Consolidations have wiped familiar names out of the school directory.

Gone are Apple Pie and Brown Jug. Chick Creek is no more. Alfred disappeared long ago. Rock Mountain and Rock Creek have passed on. Vespertine is no longer with us. Spunky Point, Welcome, Harmony, High Prairie, Adeline, Black Jack, Brass, Coal Creek, Model, Peach Grove, Poor Farm, Stony Lonesome, Stony Point and Washington Creek are no more.

The Little Red School House was the meeting



place for the district then, and the consolidated school district building is the meeting place now. The only difference...transportation no longer is a problem. Patrons can travel 20 miles as quickly as they once traveled a mile.

As recently as 1937, there were 75 active one-teacher schools dotted liberally around the country. The total fell below 70--to 67--for the first time in 1942. When World War II ended and districts regrouped that total fell to 51 and beginning of the end was in sight.

Just last week, six southwest districts consolidated into a single unit. At the beginning of school year, there were 11 active one-teacher school districts.

Here is the post World War II pattern; In 1946, 51 schools; 1947, 46; 1948, 44; 1955, 38; 1956, 30; 1959, 19; 1961; 11.

"Because of consolidations and annexations, districts are able to withstand the financial pressure, and at the same time meet the rigid educational demands," Wilson says.

So, the old schoolhouse has almost disappeared. But in its place, the county has high-caliber school plants turning out qualified graduates at a cheaper "cost per pupil" ratio

Superintendent Wilson says consolidations have taken place so fast, he's afraid the Little Red School will disappear without a trace. "That," he says "isn't good."

(The following are some school histories that has been preserved in the Lecompton Historical Society newspaper the "Bald Eagle" and can be purchased at the Territorial Capitol Museum for a \$1.00 plus 37 cents postage) Starr now being torn down, Glenn a residence, Jones is gone, Big Springs is still there and is being renovated now 2002. Little Brown Jug, later known as Deer Creek is gone. Jones is gone and Barker is gone. Crowder is a residence. Mail request to Iona Spencer, 1828 E. 100 Rd., Lecompton, Ks. 66050

#### YARNOLD STUDENTS

The following is a list of students and the year they entered school. We only have a few listing from the listing from 1897 to 1962, as when the school burned in 1940, the student records were lost. I feel that some of the board members serving in later years might have attended school there.

**Anderson**, Barbara, 1952: **Bahnmaier**, Thelma L. & Lula P. 1934: **Earl**, 1935: **Bartz**, Sandra, Clarence, Janice 1952, **Bazzel**, Lell ? : **Beasley**, Dick 1891: **Behymer**, George 1949: **Belles**, Dorothy, Pearl, Lyle 1921, Verna 1923, Louise

1924, Earl 1927, Lynda 1929, Opal 1932: **Benjamin**, Fred 1891: **Bidinger**, William O. & Jacob F. 1899, Martha I 1901, Kate A. 1903, Myrtle 1907, Frank 1910, Bernita 1929, Eula & Franklin 1932, Wilma 1934, Leo Jake 1939, Leon J. 1961: **Brokman**, Herman & Arthur 1900, Dorothy 1902, William 1907, Albert & Lena 1910, Emma 1913: **Buchheim**, Samuel F. 1902, Pricilla 1905, Theodore & May 1907, Bonnie 1909, Orville L. 1937: **Buerman**, Mary Louise & LeRoy 1929, Phyllis 1933: **Burnam**, Janice 1952: **Burton**, Leota 1912, Oscar, Janice & Patricia 1960: **Coffman**, Deannie & Ronald 1948, Dean 1950, Sharon Sue 1952: **Criss**, Tena & Richard 1911, Serena 1912, **Caruthers**, Ronald L. 1960: **Deatherage**, Janice 1948: **Derby**, Grace 1891: **Deskin**, Roy R. , Christopher, Lloyd & Iva May 1904, Raimer 1911, Russell 1924, Helen 1927: **Dodson**, Eddie 1893: **Draper**, Rosco 1897: **Duchel**, Felix (Tuckel) 1893: **Elkins**, Noah B., Lottie I. & Bryan B. 1900, Everett, 1912: **Forrester**, Phyllis & Barbar Jean 1938, Peggy Ann 1942: **Funk**, Emma 1897: **Goff**, Richard 1942: **Gress**, Roy 1901, Ruth 1923: **Hale**, Temple Eugene, Brenda Sue & Oscar Dee 1957: **Harris**, Pearl A. 1896: **Hayden**, Orval & Eva 1904: **Hird**, Harold, Ivan & Eugene 1916, Tyall ? 1918: **Hodges**, William, Alva, Morris, Winford & Thomas 1907: **Holladay**, Steven 1956: **Houk**, George J., Frank W. 1891, Charles W. 1892, Rosa E. 1893, Mary A. 1896, Rudolf A. 1897: John E. & Albert W. 1902: Harvey 1907: Harold 1913, Russell 1916, Hazel 1922, Ralph 1925, Clifford 1929, Sharon Sue 1948, Carol 1950, Mary Kay, 1952, Allen Jay 1957: **Howe**, Charles & Alberta 1922: **Ice**, Eliza & Ola 1891, Margarette 1900, Ralph L. 1902, Harold 1931, Georgia Mae 1934, Gerald 1950, Richard 1952: **Inloes**, John 1944, Orville 1948: **Johnson**, Millie 1901: **Martin**, David, & Florence 1894, Pearl 1904: **Mills**, Louise, 1952 Sharon & Patricia 1954: **Moline**, Martin J. 1898: **Nuffer**, Oscar J. 1896, Leonard A. 1896, Rosa 1898, Charles W. 1899, Albert Paul 1910. Hilton 1944: **Ozias**, Earl 1906: **Parks**, Donald & George 1957: **Peterson**, Elaine 1960: **Pooff**, James, Jackie, Delbert & Charlotte 1958: **Porter**, Charles 1891, Virgie(Virginia) 1896: **Rasmussen**, William C. & Noel 1938: **Ridenhouse**, Bertha 1925: **Rogers**, Kirby 1900: **Scheer**, Adam, David, Jonathan, Sophia 1891: **Schwemmer**, Joyce 1952, Cynda Kay 1958: **Sellers**, Richard 1942, Jimmie 1948, Sandra Kay 1952,: **Shaffer**, Herman 1893: **Slavens**, John 1945: **Smally**, Nettie 1891: **Spooner**, Catherine A. 1958, Rose



Marie 1960: **Steele**, Jimmie 1948, Sandra Kay 1952: **Stone**, Harry 1957: **Swallow**, George W., Harlin F. & Elmie(Elmer) L 1902, Vern, Robert & Norman 1912, Lucille & Mae 1915: **Talley**, Lloyd M. 1920, Merle 1925, Cleo 1927, Everett 1930: **Tillaman**, James, Ellen, Carolyn, Larry & Jim 1956: **Timmons**, Marie & Francis 1924: **Transmeier**, Albert & Clarence 1923: **Tuckel**, Ethel 1916, Robert 1917: **Underwood**, Ralph 1916: **Unger**, Clara 1892, Amelia 1893, Kate 1896, Rosa, 1898, Marie 1900, John & Harry 1902, Ellen 1904, Esther 1909, George 1910, Berdine 1933, Carol 1938: **Urton**, Donald 1949: **Warrington**, Billie 1944: **Wulfschuhle**, Mary M., Tilda 1892, Crissy(Christopher J.) 1893: Frank 1894, Charlie O. 1896, William C. 1896 Bertha E., Amelia M. 1897, Matilda, Christopher & Harry O. 1899, Louis A. 1901, Ernest F. 1902, Walter & Lena 1904, Helen 1919, Ruth 1927, Robert & Wilma 1928, Betty 1930, Donald 1932, Loren 1933, Chris Rhea (Ray) 1960.

Name of Tax Payers as of March 28, 1872

Jacob Bidinger, Christian Wulfschuhle, Valentine Roller, Michael Roller, Christian Nuffer, Henry Cummings, William Cummings, Julius Slackfleth & Mrs. Slackfleth, Mrs. Mary White, Fred A. Derby, Wm. C. Porter, Byron Porter, Thomas Benjamin, Thomas Secrest, Warren Stowe, Benjamin Stowe, Marhew Duke and John Houk.

Yarnold students that graduated from Lecompton High School: 1952-Barbara Forrester, 1954-Peggy Forrester, 1960-Sharon Houk, 1961-Carol Houk, 1963-Mary Kay Houk, 1964 Joyce Schwemmer & Ronald Caruthers.

References: Yarnold records loaned by Ruth Ice. School records-Douglas Register of Deeds office.

School records-Spencer Library at K. U.

Douglas Co. Schools by Goldie Daniels

Thanks to Ellen Duncan for the fantastic art illustrations she does for the Society.

Thanks to Irene Steele, Ruth Ice for pictures, Mary Kay Smith & Joyce Pierce for information.

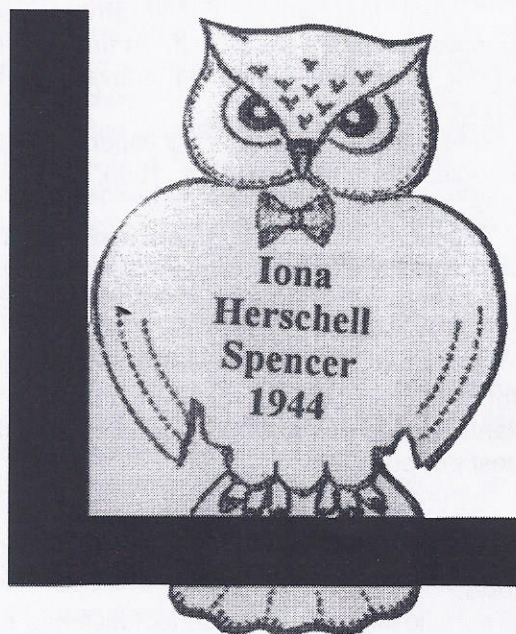
### 2003 ALUMNI BANQUET

The Lecompton Alumni Banquet will be held June 21, 2003. The cost of \$15.00 helps pay for the chairs and tables to be moved. This is a big help to those on the committee and is the major reason people are willing to help with this banquet. It is well worth the extra cost. This is an important event for those coming back to Lecompton. We will see you next June 21st.

### LECOMPTON ALUMNI

2002

The Lecompton High School Alumni Banquet was held June 15 at the gym adjoining the Lecompton High School. Another successful banquet was held. We give our thanks to Alice Bates and Linda Van Riper and their volunteers for making the event a great success. The name tags were very cute. See below.



Those attending this years are as follows:  
1930-Helen Norwood who was the oldest graduate there.

1931-Edythe Leslie Stevenson

1932-Helen Frye Hildenbrand

1936-Robert Walter & wife Edna

1939-George Simmons & wife

1940-Arloene DeKat Simmons

1940-Bill Hodson & wife Jean

1941-Maxine Glenn Dark

1941-Lura Holloway McAlexander & guest Marquita Christy

1941-Opal Lasswell Goodrick

1941-Harold Crady & wife-

1942-Helen Banks Crady

1942-Corrine Fleming Childs & husband Joe

1942-Marvin Hartman & wife Harriet

1942-Mae Everett Holderman & husband Wally

1942-Louise Webber Norwood

1942-Richard Walter & wife-

1943-Alta Kampschroeder Walter

1943-Dorothy Sulzen Casto

1943-Evelyn Houk Jensen & husband Don



1943-Lester Stauffer & wife-  
 1944-Betty Crady Stauffer  
 1944-Bill Leslie & wife-  
 1944-Betty Webber Leslie  
 1944-Mary Walter Powell  
 1944-Charles Worley & wife-  
 1944-Erma Wulfschle Worley  
 1944-Iona Herschell Spencer  
 1944-Bob Flemming & wife Martha  
 1945-A.K. Winter & wife Charlene  
 1945-James 'Bud' Banks & wife-  
 1955-Rosalie Rogers Banks  
 1945-Geraldine Holloway Harrell  
 1945-Ruth Selch Corzette & husband Bob  
 1946-Ann Morris Smith  
 1946-Beverly Bahnmaier Van Dyke & guest Norma  
     Svoboda Hamrick  
 1949-Frances Robertson Sanford  
 1949-Georgia Wingfield for husband Bill Wingfield  
     deceased  
 1950-Carol Morris Kibbee & husband-  
 1951-Kenneth Kibbee  
 1950-Marge Schmitt for husband Jerry  
 1951-Leah Bahnmaier Shaw & husband Ed  
 1951-Ruth Rothwell Vervynck  
 1951-Bob Dark & wife-  
 1952-Irene Kibbee Dark  
 1952-Jane Rothwell Childs  
 1952-Lois Hildenbrand Condley & husband Leon  
 1952-Amelia Hartman Hagen  
 1952-Marjorie Hildenbrand  
 1952-Mary Myer Manis & husband Melvin  
 1952-Galen Sanford & wife Dianne  
 1952-Dorothy Powell Woods & husband Ernie  
 1952-Nancy Morris Howard & husband Len  
 1952-Dale Gregg  
 1952-G. Vernon Chiles & wife Edna  
 1953-Charles Turner  
 1953-John Salisbury  
 1955-John Bahnmaier & wife Lana  
 1955-John Nilsen & wife Marilyn  
 1955-Willie Turner & mother Amy Bowlin  
 1958-Robert Morris & wife-  
 1958-Mary Lou Salisbury Morris  
 1959-J. H. Vestal & wife-  
 1959-Jeanie Kent Vestal  
 1960-Paul Bahnmaier  
 1960-Richard Hildenbrand & wife Rhonda  
 1961-Harold Hudson & guest Michelle Williams  
 1961-Dorothy Chinn Moore & husband Dennis  
 1961-Mary Morris Christman & husband-  
 1962-Bob Christman  
 1962-Darrel Dean Burd & wife Debbie

1962-Bob Decker  
 1962-Millie Higgins Hein & husband  
 1962-Dennis Gowing & wife-  
 1965-Donna Andes Gowing  
 1962-Margie Hudson Gist & husband Larry  
 1962-Walter Confer & wife-  
 1964-Donna Gowing Confer  
 1963-Mildred Chiles Lester  
 1963-Wanda Chiles Manis  
 1963-Linda Van Riper  
 1964-Donna Curran DeWitt  
 1964-Wanda Becker Meinhardt  
 1964-Dennis Stauffer & wife-  
 1966-Mary Skinner Stauffer  
 1965-Linda Stauffer  
 1965-Connie Norwood Stilson & husband Terry  
 1967-Larry Bates & wife-  
 1969-Alice Chilcott Bates  
 1967-Deanna Gowing Posik & husband Bob  
 1969-Bonny Leslie Fugett & husband Steve  
 1976-Jeff Goodrick  
 1977-Brenda Gregg Hepner  
 1979-Bill Crain & Elaine Porter  
 1982-James Gregg  
 Ed Butler

We have tried to list everyone there, if not, we are  
 sorry. Please send any change of address, or other  
 changes to Linda Van Riper, 5230 S. E. 4th St.  
 Terr., Tecumseh, Ks. 66542.

### Visitors to Lecompton

Three relatives of John C. Calhoun who was  
 president of the Lecompton Constitution  
 Convention and the first surveyor-general of  
 Kansas. He was a good friend of President  
 Abraham Lincoln.

They all became members of the Historical  
 Society.  
 John Calhoun McCord-Great, great grandson from  
 Michigan.  
 Sarah McCord-Great, great, great granddaughter  
 from Washington.  
 Katherine M. Mendenhall-Great, great grand-  
 daughter from Overland Park.

Our Museum has so much early history, pictures,  
 and information on the early settlers to Lecompton.

This is what draws so many visitors from other  
 states to Lecompton to research their ancestors  
 and learn more about the beginning of the Civil War

***Have a happy Thanksgiving***





**YARNOLD SCHOOL THAT BURNED IN 1940**



**YARNOLD SCHOOL DISTRICT # 40-1936**

Front row: Phyllis Buerman, Orville Buchheim, Berdene Unger, Georgia Ice, Wilma Bidinger  
 Middle row: Harold Ice, Thelma Bahnmaier, Lula Bahnmaier, Donald Wulfkuhle, Betty Wulfkuhle,  
 Loren Wulfkuhle  
 Back row: Clifford Houk, Wilma Wulfkuhle, Ruth Wulfkuhle, Robert Wulfkuhle, Mary Buerman,  
 Bernita Bidinger

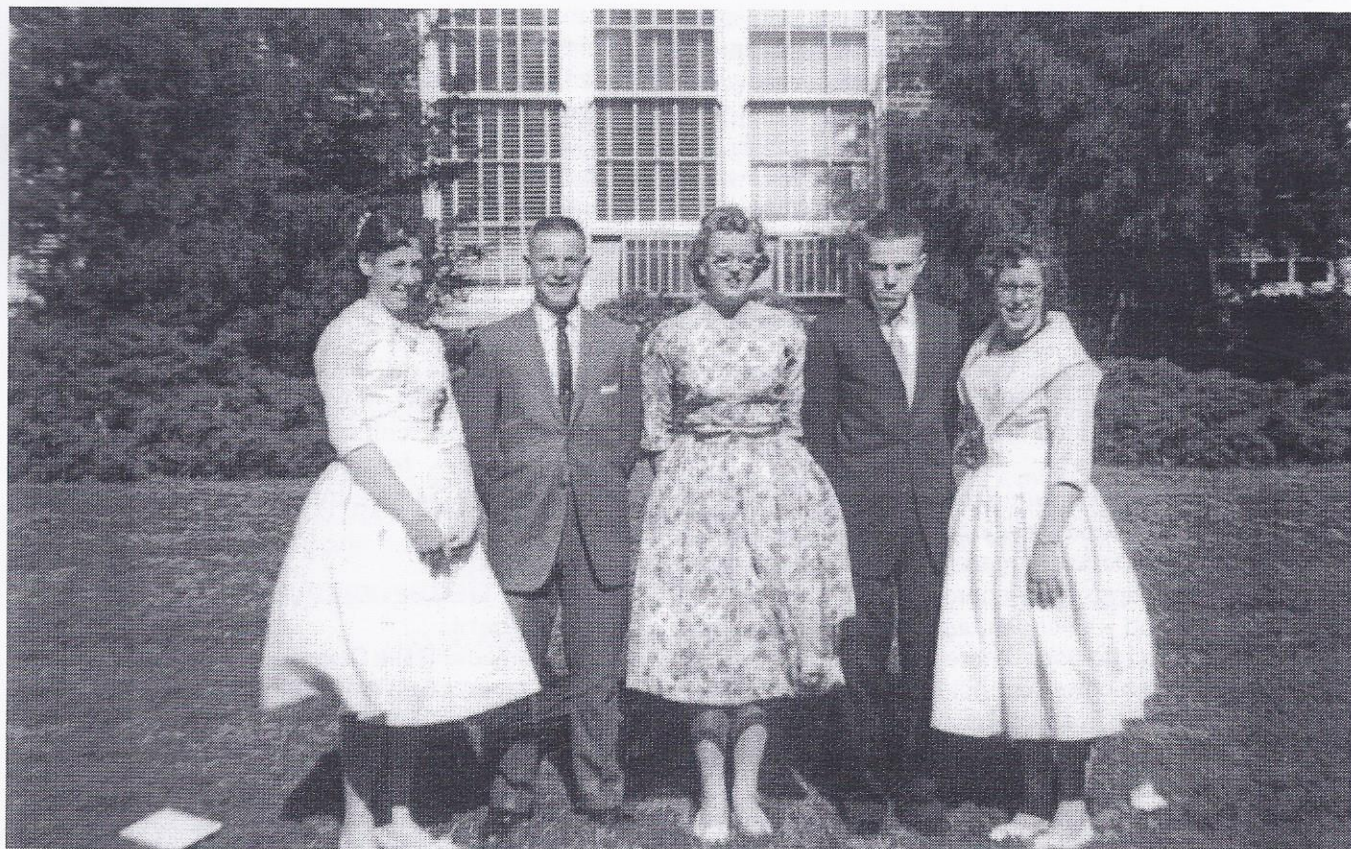




**YARNOLD SCHOOL DISTRICT #40-1952-1953**

Front row: Louise Mills, Joyce Schwemmer, Sandy Steele, Carol Houk, Richard Ice, Barbara Anderson.  
and Sharon Coffman

Back row: Sue Bartz, Sharon Houk, Jerry Ice, Jim Steele, Mary Houk, Jan Bartz, Orville Inloes



**YARNOLD SCHOOL DISTRICT #40**

The last graduating Class from Yarnold School May 21, 1960

Sandra Steele, Richard Ice, Joyce Schwemmer, Ronald Caruthers & Barbara Anderson



## THANKSGIVING AN ANCIENT CUSTOM

BY Frances Black, Dodge City Correspondent  
Published in the Southwest Kansas SENIOR BEACON.  
Volume 5 No. 3--November, 1988

The origin of Thanksgiving is an ancient and universal custom, for in biblical times, the Hebrews had offered thanks for abundant harvest with the 8-day Feast of Tabernacles.

In December of 1620, 102 Pilgrims, fleeing religious oppression, landed at Plymouth after a four month journey on the Mayflower. Supplies had been depleted during the trip, and only with the help of the Wampanoag Indians were they able to survive. During the severe winter and plague, hundreds of Indians and 46 of their group died. By the fall of 1621, the survivors had much to be thankful for, as they'd had abundant crops.

Mainly due to the help of an Indian named Squanto they were to have lots of food. As a boy, he had been captured by English traders and sold into slavery in Spain. He escaped to England, working for a wealthy merchant and learning to speak English. He had returned to his native village six months before the Pilgrims arrived. He helped them build houses and to plant and cultivate crops.

The Pilgrims elected a new Governor, William Bradford, who succeeded the deceased Governor Carver. Governor Bradford proclaimed a three-day feast and celebration in their small town, which consisted of seven homes and four communal buildings. According to Bradford's own history, "Of Plymouth Plantation," he sent "four men fowling," and the ducks, geese and turkeys were added to lobsters, clams, bass, corn, green vegetables and fruit. The Indians "went out and killed five deer," which they brought to the Governor.

The Pilgrims invited the chief of the Wampanoag tribe, Massasoit, and 90 of his braves. The work of preparing all the food fell to four Pilgrim women and two teenagers.

They prepared a varied menu, but it isn't definitely known if they had turkey and pumpkin pie, which according to popular legend, are two major staples of Thanksgiving. One source stated they had wild turkey stuffed with chestnuts. It is certain that they had venison and fish. There was no milk, butter or cheese, since cows had not been aboard the Mayflower. There was probably no pumpkin pie, or bread as we know it. Since there was no flour, the pumpkin was probably boiled. The bread they made was boiled corn kneaded in round cakes and

fried in venison fat. Wild cranberries were boiled and mashed into a sauce for the meal's meats.

This three day feast and celebration was a joyful occasion. A parade of soldiers, with muskets and bugles was staged by Captain Myles Standish. The braves competed with the settlers in foot races and jumping matches. The Indians showed their skill with bow and arrow, and the settlers exhibited their marksmanship with guns.

Thanksgiving wasn't celebrated the following year, due to a poor harvest, and more immigrants arriving. In fact, after that first Thanksgiving, the Pilgrims never regularly had a Thanksgiving Day.

In October of 1777, the 13 colonies joined in a common thanksgiving celebration to commemorate the victory over the British at Saratoga. In the years following the British surrender at Yorktown in 1781, Congress routinely proclaimed a number of days of thanksgiving to celebrate the survival of the United States of America, also a one-time affair.

The first national Thanksgiving proclamation was issued by President Washington in 1789, but due to discord among the colonies, the order wasn't carried out. An army surgeon near Valley Forge on the first official national Thanksgiving Day said, "Mankind is never truly thankful for the benefits of life until they have experienced the want of them." How true this is!

Finally, when Pres. Lincoln issued a proclamation on Oct. 3, 1863, setting aside the last Thursday in November as a National Thanksgiving Day.

In 1939, Pres. Roosevelt shifted the day to the third Thursday in November, due to store merchants who wanted more shopping days between Thanksgiving and Christmas. The Merchants were pleased, but millions of Americans protested. In the Spring 1941, Pres. Roosevelt publicly admitted he'd made an error, and changed the holiday back to the last Thursday of November.

As we celebrate this holiday, let us be reminded of the reasons we celebrate: gratitude for the pleasures of life, for love and companionship. Psalms 107: 1a "O give thanks unto the Lord, for He is good."

## MEMBERSHIP REPORT

### Life members:

Samatha Rose Dennon, baby by grandparents Dr. Otto & Kathryn Spurny  
Wm. Wayne Smith and  
Leonard L. Smith by Mother Dorothy Smith  
Wanda Lawson (Petefish)  
Bernie E. Nordling & wife  
Barbara Nordling (Burkholder)



## MUSEUM NOTES

1. Mini-coin (Franklin Mint collection that traveled around the world on Apollo XIV by Phyllis Martin)
2. Her great grandmother Celia Foss Farrar 2 piece swim suit. She came to Kansas in 1860 by Janice Peterson.
- 3 The Topeka State Journal, Oct. 30, 1935. (150 pages) by Jason Dexter
4. Lecompton School pictures: 11 Jr.-Sr. Banquet pictures. 30 Misc. High School pictures. 1 Grade school Class picture, 7-8 grade for 1950-51. 1 Sophomore class 1952-53. 7th & 8th grade class 1949-50 and 9 pictures of 1951 flood by Larry Sanford.
5. Lecompton Grade school records for 1920 & 30's. by Iona Spencer
6. Picture of Emmanuel Stone church at Stull, taken by Donald Rake, son of Wilbur Rake in 1973. 3 other pictures of the Church congregation by Pearl Schneider.
7. Fur Mink Coat, 2 silk Handkerchiefs & beaded hand bag. loaned by Faye Talley
8. 1875-1975-100 year old United States Conoco map. - Helen Dolbier
9. 2 Lecompton High School Athletic letters and 2 sleeve patches that were Bill Andersons' by Marcella Anderson
10. Book-Earning the Right to do fancy work, by Ida Eisenhower-Melvin & Venora Dark.
11. Book-A History of Kansas 1909-Joyce Behlke
12. Book-History of the United States, 1924-Elsie Middleton
13. Book-Korean War 1950-1951-Loaned by Robert Weeks.
14. Fruit tree Sprayer by Wilma & Roy Cropp
15. Shoe Spats by A. K. & Charlene Winter

16. Journal of the House, Rev. Debbie Dick, Chaplain of the day-Feb. 20, 2002

## OBITUARIES

**Geelan, A. Lowell**, 70, Topeka, died Monday June 3, 2002. He was born April 17, 1932, in Topeka the son of Amos G. and Eva May Geelan.

He graduated from Topeka High School in 1950. He was member of the First Christian Church since 1963, where he sang, served as deacon and elder, and taught Sunday school classes. He was a Life member of the Lecompton Historical Society.

He married Sally Louise Ihinger on Sept. 6, 1952, in Topeka. She survives.

Other survivors include a daughter, Lise L. White, Meriden; and two grandchildren. Burial was in Mount Hope Cemetery.

**Bronson, Dr. Jack**, 66, Great Bend, died Friday, June 14, 2002.

Dr. Bronson was a retired teacher and athletics coach. He was principal at Lecompton High School. Jack retired in 1993 following 34 years in the education field, teaching and coaching.

He was born July 7, 1935, at Fredonia, the son of Louie W. and Ruth J. Dodge Bronson.

He was a member of First Presbyterian Church in Great Bend. He was a member of the Lecompton Historical Society.

He married Dorothy Dean Vahrenberg on Aug. 13, 1961, in New Franklin, Mo. She survives

Other survivors include three daughters, DeAnn Jenkins and Kyla Tibbetts, both of Wichita, and Rhonda Slava, Overland Park; a sister, Jill Cott, San Antonio; and three grandchildren.

Burial in Walnut Grove Cemetery in Boonville, Mo.

\*\*\*\*\*Please Clip and Mail With Your Check\*\*\*\*\*

THE LECOMPTON HISTORICAL SOCIETY, Lecompton, Kansas 66050, is a non-profit corporation for the preservation of historical sites. We are eager for continued membership and new members.

Dues are \$5.00 per year for individual membership and \$7.00 for a couple's membership. The dues are from December to December. Life membership is \$50 per individual, contributions are tax deductible. Checks should be made payable to the Lecompton Historical Society, and mailed to Georgia Trammel, Chairman, 11 N. 2064 Rd, Lecompton, KS 66050

- |            |                                                |
|------------|------------------------------------------------|
| (        ) | \$5.00 Annual Individual Membership            |
| (        ) | \$7.00 Annual Couple's Membership              |
| (        ) | \$50.00 Individual Life or Memorial Membership |
| (        ) | Other Contribution      \$ _____               |

NAME \_\_\_\_\_ Address \_\_\_\_\_

City \_\_\_\_\_ State \_\_\_\_\_ Zip \_\_\_\_\_

**PLEASE NOTIFY US OF ANY CHANGE OF ADDRESS**

It costs the Lecompton Historical Society .50 cents for a returned change of address



**Hall, Opal Godfrey (Matney)**, 92, St Marys, formerly of Topeka, died Sat. June 29, 2002. She was born Jan. 19, 1910, in Topeka, to John Everett and Martha M. Brown Matney. She graduated from Lecompton High School.

She was a member of Oakland United Methodist Church in Topeka and United Methodist Women. She was a Life member of the Lecompton Historical Society.

She married John L. Godfrey Jan. 19, 1939, in Topeka. He preceded her in death. She married Theodore J. Hall Jan. 19, 1977, in Topeka. He preceded her in death. A grandson, Curtis Davenport, and a great-grandson, Johathan Beam, also died.

Survivors include a son, Marvin Godfrey, Topeka; a daughter, Charlotte Davenport, Branson, Mo.; a sister, Lorene Maxwell, Topeka; four granddaughters, 12 great-grandchildren, two step great-grandchildren and a great-great grandson.

Burial in Mount Hope Cemetery.

**Hoad, Alice J.** 81, Topeka, died Saturday, June 29, 2002, at Topeka.

She was born June 23, 1921, in Topeka, to Bruce Evans and Laura Iva Hedrick Hoad. She graduated from Topeka High School.

Miss Hoad was a member of First United Methodist Church and a Adult Bible Study class at the church. She was a member of the Lecompton Historical Society.

Survivors include a brother, Bruce E. Hoad, Jr., Lawrence; and a sister, Gertrude Brodhag, Topeka.

Burial was in Memorial Park Cemetery.

**Emery, Donald Jr**, 67, Topeka, died Friday Aug. 2, 2002.

He was born June 15, 1935, in Topeka, the son of Donald A. Emery Sr. and Evangeline Danner Emery. He attend Topeka High School.

He was a member of Northland Christian Church. He also did volunteer work at several school libraries in Topeka. He was a member of the Lecompton Historical Socceity since 1992.

He marr ied Kathleen A. Dietz on June 20, 1956 in Pratt. She survives.

Other survivors include three daughters, Darla L. Emery and Jodie A. Bevens, both of Topeka, and Ronna J. Rowe, Kansas City, Kan. and four grandsons. He was preceded in death by an infant son, Dana Wayne Emery, on May 31, 1957.

Burial in Memorial Park Cemtery.

**Fowler, George D.**, 79, died Aug. 4, 2002.

He was born Nov. 11, 1922, in Avery, Texas, to Lem and Lula Brem Fowler, and lived in Topeka since 1926

He was a veteran of World War II and the Korean War, having served in the Army and Air Force for 20 years. He was a staff sergeant in the Air Force before he retired. He was a member of Northland Christian Church and a Life member of the Lecompton Historical Society.

He married Mary Maxine Maust on Aug. 3, 1949, in Topeka. She survives.

Other survivors include a daughter, Mary Walker, Topeka; a brother, A. J. Fowler, Lubbock, Tex. and two sisters, Minnie Lee Fowler, Texarkana, Tex. amd Dorothy Gilder, Kerrville, Tex.

Burial in Maple Grove Cemetery at Lecompton.

\*\*\*\*\*

President\* Paul Bahnmaier

Vice President \* Rich McConnell

Secretary \* Vicki Roberts

Treasurer \* Betty Leslie

Board Members \* Maxine Dark, George Simmons

Keith Noe, Jason Dexter, Duane Wulfkuhle, Ron Meier

Curators \* Opal Goodrick, Dorothy Shaner , Ann Dunnaway

George & Arloene Simmons, Darlene Paslay

Membership Ass'ts. \*Duane & Dorothy Wulfkuhle

Proof reader \*Louise Norwood

Program\* Beverly VanDyke

Membership \* Georgia Simmons Trammel

Genealogy & Historical researcher\* Iona Spencer

Tours\* Charlene Winter

Funding\* Mae Holderman

Illustrator\* Ellen Duncan

Assistant Treasurer \* Sherri Neill

Kitchen \* Helen Hildenbrand & Vicki Leochner

Memorials\* Ruth Ice

\*\*\*\*\*

Forwarding Service Requested

Published by

The Lecompton Historical Society

Lecompton, Kansas

Non-Profit Organization

U.S. POSTAGE PAID

Permit No. 1

Lecompton, Kansas